

THE EFFECT OF VARIOUS HYPERGLYCEMIA RATES ON CA1 NEURONAL DENSITY IN MALE RATS

Maryam Tehranipour

Department of Biology, Mashhad Branch, Islamic Azad University, Mashhad, Iran.

Summary

Memory is a mental activity that all information was learned or experimented recalled again. Hippocampus is an important area in memory phenomena. Some factor such as hyperglycemia, hypoglycemia, stress, aging, corticosteroids and other hormones change the structures and function of this area. In the present study the effects of various rates of hyperglycemia on CA1 area of hippocampus neuronal density in male Wistar rats was investigated.

At first forty male rat divided to four groups randomly (control and experimental 1, 2, 3). Hyperglycemia was induced by a single injection (i.p.) of streptozotocyn (45, 50, 55mg/kg). Control animals were given an equal volume of citrate buffer. After one month, Animal was decapitated and their brain dissected, fixed in 10% formalin, sectioned in 7 μ m thickness and stained by toluidin blue. By applying systematic random sampling scheme the neuronal density of CA1 area of hippocampus were estimated. Statistical analyses showed significant increase ($p < 0/05$) in the CA1 area of hippocampus neuronal density in experimental 1,2 in compare with control group. This increase is a kind of neurogenes that induce with glucose increasing. Also there is a meaningful decrease in neuronal density in experimental 3 ($p < 0/001$). Hyperglycemia induces elevated metabolism and hypoxia that is one of the reasons of neuronal degeneration because of increasing glucose.

Key words: Hyperglycemia, CA1, Neuronal Density

Running title: CA1 neuronal density in various hyperglycemia

Corresponding Author: Tehranipour Maryam, Department of Biology, Mashhad Branch, Islamic Azad University, Mashhad, Iran. Tel: +98511835050 Fax: +985118424020E mail: maryam_tehranipour@mshdiau.ac.ir

Introduction

The hippocampus is an important structure for memory processing. It is a particularly vulnerable and sensitive region of the brain that is also very important for declarative and spatial learning and memory. Hippocampal neurons are vulnerable to seizures, strokes, and head trauma, as well as responding to stressful experiences. At the same time they show remarkable plasticity, involving long-term synaptic potentiation and depression, dendrite remodeling, synaptic turnover, and neurogenesis in the case of the dentate gyrus (1).The hippocampus has been implicated in certain short-term memory. Indeed hippocampal lesions often produce short-term memory deficits (2).The hippocampus is preferentially susceptible to a wide variety of toxic insults and disease processes, including hypoxia-ischemia and hypoglycemia (3).Metabolic diseases such as diabetes and obesity have been associated with increased vulnerability to stress (4) and cognitive dysfunction (5).Diabetes mellitus can lead to functional and structural deficits in both the peripheral and central nervous system.

The pathogenesis of these deficits is multifactor and may involve microvascular dysfunction and oxidative stress (6).Cognitive deficits are also reported to occur in animal models of diabetes (Streptozotocin induced) which can be prevented, but not fully reversed by insulin treatment (7). Diabetes also induced morphological changes in the presynaptic mossy fiber terminals (MFT) that form excitatory synaptic contacts with the proximal CA3 apical dendrites (8).

Oxidative stress induced by chronic hyperglycemia contributes to cerebrovascular complication in diabetes (9).Also diabetes mellitus is associated with an increased risk for cerebrovascular disease(10).Accumulating data support the conclusion that oxidative stress induced by chronic hyperglycemia plays akey role in both microvascular and macrovascular complications of diabetes, including Stroke (11).Many deleterious events contribute to oxidative damage to neurons in diabetes: because of high levels of polyunsaturated lipids in the brain, direct liperoxidation frequently occurs causing lipid membrane disruption and consequent neurodegeneration (12).

Moreover, oxidative stress increase tissue levels of highly reactive and toxic substances and effects signal transduction pathways involved in neuronal and endothelial cell function. Primary diabetic encephalopathy is recognized as a late complication of both type 1 and type 2 diabetes (13). Impairments in learning, memory, problem salving and mental and motor speed are more common in type1 diabetic patients than in the general population (14).A diabetic duration dependent decline in

cognitive function occurs independently of hypoglycemic episodes(15) and impaired intellectual and cognitive developments in type 1 diabetic children correlate with diagnosis at young age, male sex and metabolic status. Cognitive deficits (16) and poor performances in abstract reasoning and complex psychomotor functioning occur in type 2 diabetes. Learning and memory dysfunctions are more prominent in elderly type 2 diabetic patients (17).It has not been determined whether this is because of potentiation of the normal aging process, a function of diabetes duration, or both.

Notably Alzheimer disease is twice as prevalent in the diabetic population as in nondiabeti subjects (18).Several recent studies have implicated abnormal function of the insulin/IGF axis in the early pathogenesis of Alzheimer's disease. Insulin and IGF- 1 are believed to regulate s-amyloid levels and tau phosphorylation (19).

Impaired spatial learning and memory occur in animal models of both type1 and type2 diabetes. In the hippocampus of STZ-induced rats, long –term potentiation is impaired, whereas long-term depression is enhanced indicating altered hippocampal synaptic plasticity, which are corrected by insulin treatment (20).

The aim of present experimental design was to induce various hyperglycemias and to assess the effects of that on CA1 neuronal density.

Materials and methods

Forty male Wistar rats, weighing 200-250g, were housed under standard laboratory conditions and kept under natural 12h light: 12h dark cycle. The animals procured from Razi Animal House, were housed 2 per cage with free access to standard food and water. Rats were acclimatized to laboratory conditions before testing. Animal were divided into four different groups for staminate the effect of hyperglycemia.

Group 1- Normal- rats were not subjected to any procedures.

Group 2- Hyperglycemic- under STZ injection (45mgkg-1). (glucose level<200mgdl-1)

Group 3- Hyperglycemic- under STZ injection (50mgkg-1). (glucose level<300mgdl-1)

Group 4- Hyperglycemic- under STZ injection (55mgkg-1). (glucose level>400mgdl-1)

All the experimental protocols were conducted in faculty of science, Islamic Azad University of Mashhad, Iran (2011). All chemical used in this study were purchased from Sigma (UK).

Induction of hyperglycemia:

Hyperglycemia was induced in rats by a single injection of STZ (45, 50, 55mg kg⁻¹) freshly dissolved in citrate buffer (PH 4.5). Control animals were injected with citrate buffer. Hyperglycemia was confirmed after 4 weeks.

The body weight was measured at the beginning and the end of the experiment. All animals were checked for glucose blood concentration at the beginning of the experiment. After 2 weeks from STZ-injection, as well as on the day before of experiment (21).

Tissue collection:

Animals were anesthetized with sodium pentobarbital (64mg/kg) and decapitated. The whole brain was removed and fixed in 10% paraformaldehyde. NaCl was added to the fixative to make the tissue float in order to overcome deformities during the fixation period. Paraffin embedded tissue blocks were sectioned at 7µ thickness coronaly and stained with haematoxylin-eosin (22).

Measurement of neuronal density in CA1:

Hemotoxylin-eosin-stained serial paraffin sections were prepared from 10 hippocampi from individual animals in each group. Regions of hippocampus (CA1- CA2- CA3) were identified according to Paxinos and Watson (23). Tissue blocks containing samples (brains) were serially cut throughout. From several hundred sections per block; of each 20 section 3 serial sections were obtained. For example for the first series: 24st, 25st, 26st section and for the second series: 46st, 47st, 48st section and so on. Therefore we mounted every 3 section on a slide. At a practical level, Stereological methods are precise tools for obtaining quantitative information about three-dimensional structures based mainly on observations made on sections (24). All experiments were performed a minimum of two times.

Statistical analyze:

The ratio of numerical density of neurons in each section of hippocampus was used as an index. Student's t test was used for comparison when only 2 groups were analyzed. Statistical significance was chosen as (p<0.05). All results are reported as mean ±SEM.

Results

1-Hyperglycemia was assessed in this study by monitoring the blood glucose levels in both PBS and STZ injected rats. There was a significant increase ($p<0.001$) in blood glucose levels from 100 ± 5 mg/dL in control to 470 ± 18 mg/ml in diabetic rats. In Fig. 1 was showed all part of hippocampus.

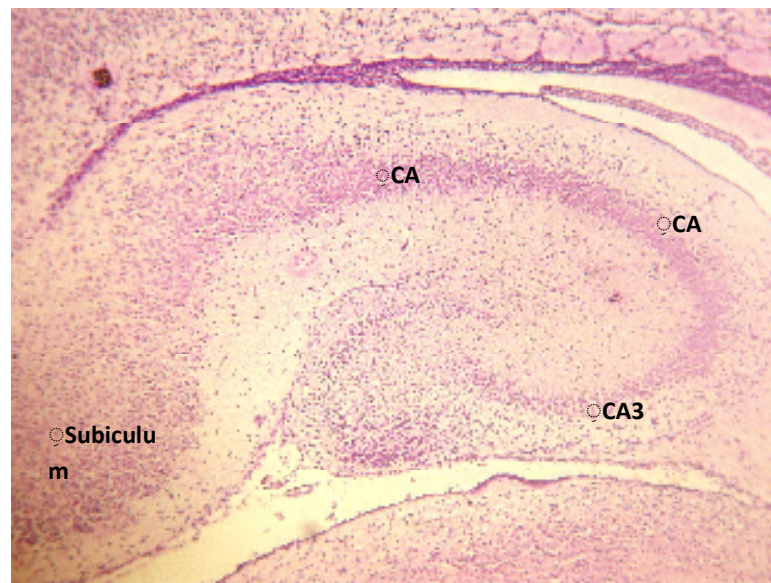


Fig.1: Photomicrograph of the brain section at the region of the midhippocampus.(X40).

2-Hyperglycemia produced evoked significant CA1 neuronal increase in Experimental 2 and 3. (Fig.2). This index was (1597 ± 113) in control to (2424 ± 49) and (2642 ± 40) in hyperglycemic rats ($p<0.05$).

3- In experimental 3, there is a meaningful decrease in CA1 neuronal density in compare to control group (1106 ± 35). (Fig.2).

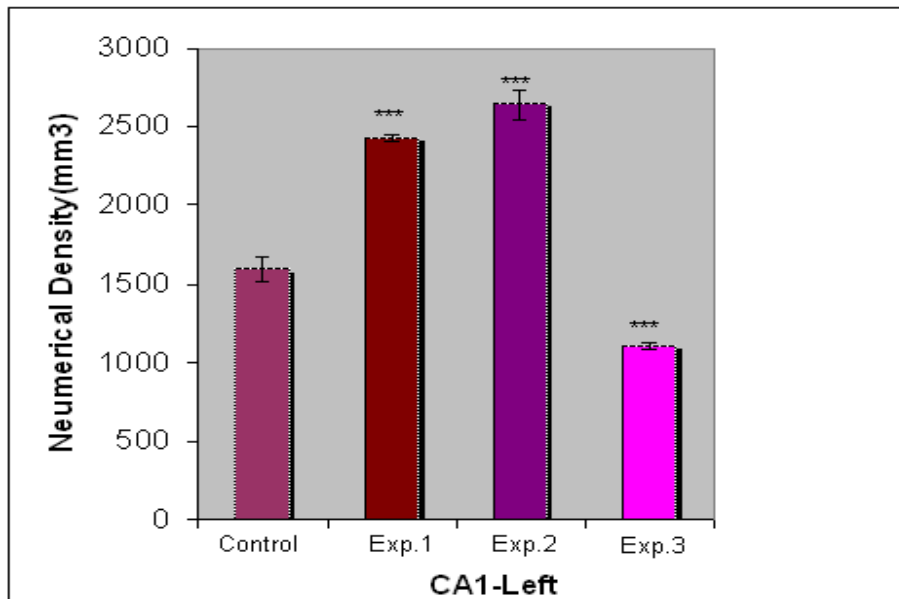


Fig.2: CA1 Neuronal density in hyperglycemic rats compare to control. The values are presented as means± SEM. n=10. *P<0.05 Student s t test compare hyperglycemic to controls.

4- There is not different between neuronal density in left and right hippocampus (Fig.3).

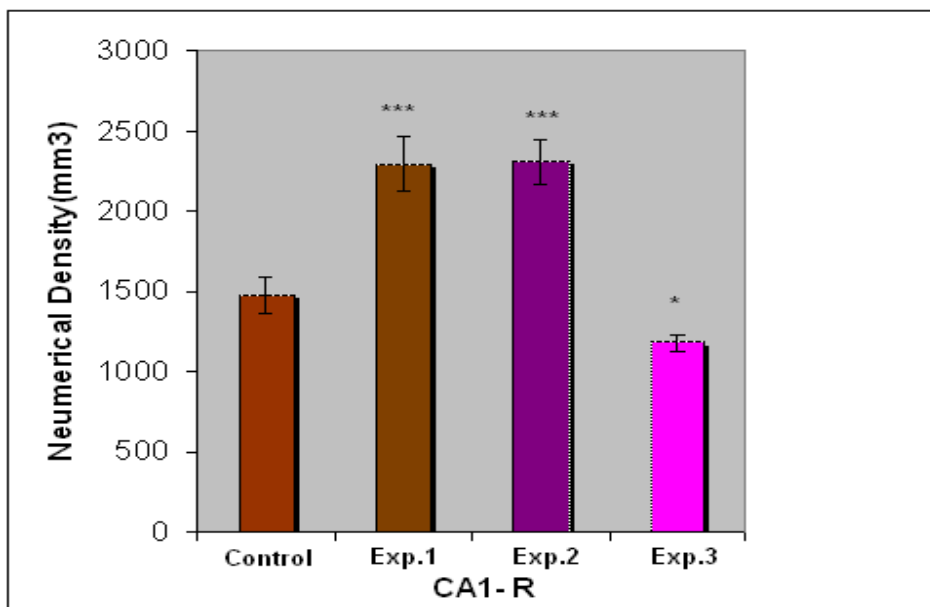


Fig.3: CA1 Neuronal density in hyperglycemic rats in right hippocampus. The values are presented as means± SEM. n=10. *P<0.05 Student s t test compare hyperglycemic to controls.

Discussion

The hippocampus is necessary for normal cognitive function, especially for processing recognition memory and transferring short-term memory items into long term storage (25). In our morphometric studies on pyramidal cells in CA1, it has been shown that in high hyperglycemia there is neuronal loss and damage. Although in experimental 1,2 groups there is a remarkable neuronal density increase in CA1 (Fig2,3) but not in experimental 3. Hyperglycemia causes morphometric neuronal changes (17).

This observation has allowed us to postulate that the neuronal death in the infant from diabetic mothers proceeds on an apoptotic pathway (26). Diabetes mellitus can result in a 30-40% reduction in brain iron (9). Iron in the form of cytochromes is a required component of cellular oxidative metabolism in the brain and is thus essential for normal neuronal function. Iron deficiency of the heart, liver and skeletal muscle has been shown to affect cellular energy production and organ performance (27).

Arguably, severe iron deficiency may lead to similar deficits in cellular energy metabolism and organ performance in the brain, resulting in a reduced ability to respond to restriction of oxygen and perfusion and in greater hippocampus damage (27).

The hippocampus, especially the DG, is one of the iron rich areas of the rat brain, Finding suggest that the integrity of the prenatal hippocampus and its cholinergic input are important for normal development of memory and learning (16). In other hand, this area of the brain (hippocampus) particularly the dentate region is also vulnerable to damage when glucocorticoids are elevated as occurs, for example, when an organism is stressed (20).

The hippocampal morphological changes induced by stress are mediated by interactions between Gc secretion, excitatory amino acid, and are also correlated with deficits in hippocampal dependent memory (15). These results and our results confirm that an oxidative imbalance occurs in the hippocampus of hyperglycemic rats as we have previously shown. Several studies have pointed out that NF-kB (nuclear factor) activation is inhibited by a variety of antioxidants, such as N-acetyl-cystein, butylated hydroxyl anisole, vitamin E, and lipoic acid (10): these data suggest that antioxidants effect some steps of signaling events leading to phosphorylation, ubiquitination and degradation (6). The role of oxidative stress and Nk-kB activation on hyperglycemia complications is well documented, moreover antioxidant treatment exerts a beneficial effect in experimental models of chronic injury in hyperglycemia and treatment with antioxidants can significantly reduce hyperglycemia complications

(8). Reactive oxygen species activates a variety of target genes linked to the development of diabetic complications (28).

In addition, the loss of arachidonic acid content of the synaptosomal membrane, induced by hyperglycemia and by transient cerebral ischemia, making the membrane more resistant to oxidative stress. Oxidative stress induced by chronic hyperglycemia directly can damage ionic homeostasis and membrane transport systems in the brain (10) and may be this is one of the reasons for hippocampal neurons death. Apoptosis in hyperglycemia has been ascribed to oxidative stress (2). However, other experimental studies on streptozotocin induced rat diabetic, showed pathological changes, such as so-called dark neurons and neuronal loss, in different cerebral regions, especially in the hippocampus. A dominant opinion is that hyperglycemia aggravates ischaemic brain damage in experimental STZ-diabetes with transient cerebral ischemia in rats (3). It has been suggested that hyperglycemia and ischaemia evoke the oxidative stress following an impairment of the respiratory chain in mitochondria and an overproduction of the reactive oxygen species (ROS). ROS are considered as a main factor in the pathogenesis on neuronal death (3). The other reason for neuronal death in hyperglycemia is Ischemia. Some studies shown that there is differences in the neural death between hyperglycemia and Ischaemia (3). Pathomechanism of degenerative changes and neuronal loss through apoptosis or necrosis is not clear until now. It has been suggested that changes in intracellular calcium concentrations in oxidative stress may indicate the pathway of cell death. It is suggested that more severe injury with high intracellular calcium concentration (Ca^{+2}) promotes necrotic cell death, where low (Ca^{+2}) and milder injury promotes cell death through apoptosis (29). Studies on antioxidative treatment would deliver further data important in the exploration of neuronal death in diabetes and ischemia.

In total, it is concluded that hyperglycemia induces some changes in hippocampus neuronal structure and density. Statistical analysis show significant decrease in neuronal density (ND) in high hyperglycemic rats compare to control but in low hyperglycemic groups^{1,2} neuronal density was increased. Therefore, it is better in hyperglycemic condition the level of glucose was maintained under normal condition.

Acknowledgment

This study was supported by Islamic Azad University of Mashhad, Iran.

References

- 1- McEwen BS. Stress and the aging hippocampus. *Front Neuroendocrinol* .(1999);20(1):49-70.
- 2- Mumby DG, Gaskin S, Glenn MJ, Schramek TE, Lehmann H. Hippocampal damage and exploratory Preferences in rats: memory for objects, places, and contexts. *Learn Mem*.(2002).;9(2):49-57.
- 3- Piotrowski P, Wierzbicka K, Smiałek M. Neuronal death in the rat hippocampus in experimental diabetes and cerebral ischaemia treated withantioxidants. *Folia Neuropathol* (2001);39(3):147-54.
- 4-Damasceno DC, Volpato GT, de Mattos Paranhos Calderon I, Cunha Rudge MV. Oxidative stress and diabetes in pregnant rats. *Anim Reprod Sci*.(2002); 15;72(3-4):235-44.
- 5-Nazer J, Ramirez R. Congenital malformations in the offspring of diabetic mothers. *Rev Med Chil*.(2000);128(9):1045-52.
- 6- Patil CS, Singh VP, Kulkarni SK. Modulatory effect of sildenafil in diabetes and electroconvulsive shock-induced cognitive dysfunction in rats. *Pharmacol Rep*(2006);58(3):373-80.
- 7-Kuhad A, Sethi R, Chopra K. Lycopene attenuates diabetes-associated cognitive decline in rats. *Life Sci*(2008) [Epub ahead of print}.
- 8-Magarinos AM, McEwen BS. Experimental diabetes in rats causes hippocampal dendritic and synaptic reorganization and increased glucocorticoid reactivity to stress. *Proc Natl Acad Sci U S A*(2000) 26;97(20):11056-61.
- 9-Damasceno DC, Volpato GT, de Mattos Paranhos Calderon I, Cunha Rudge MV. Oxidative stress and diabetes in pregnant rats. *Anim Reprod Sci*.(2002) 15;72(3-4):235-44.
- 10-Aragno M, Mastrocola R, Brignardello E, Catalano M, Robino G, Manti R, Parola M, Danni O, Boccuzzi G. Dehydroepiandrosterone modulates nuclear factor-kappaB activation in hippocampus of diabetic rats. *Endocrinology*.(2002);143(9):3250-8.
- 11-Artola A. Diabetes-, stress- and ageing-related changes in synaptic plasticity in hippocampus and neocortex the same metaplastic process? *Eur J Pharmacol*.(2008)6;585(1):153-62.
- 12-Ristow M. Neurodegenerative disorders associated with diabetes mellitus. *J Mol Med*.(2004);82(8):510-29.
- 13-Kinney BA, Rabe MB, Jensen RA, Steger RW. Maternal hyperglycemia leads to genderdependent deficits in learning and memory in offspring. *Exp Biol Med (Maywood)*(2003);228(2):152-9.
- 14- Deregnier RA, Nelson CA, Thomas KM, Wewerka S, Georgieff MK. Neurophysiologic evaluation of auditory recognition memory in healthy newborn infants and infants of diabetic mothers.*J Pediatr*.(2000);137(6):777-84.
- 15- DeBoer T, Wewerka S, Bauer PJ, Georgieff MK, Nelson CA. Explicit memory performance in infants of diabetic mothers at 1 year of age. *Dev Med Child Neurol*.(2005);47(8):525-31.

- 16- Ryan CM, Geckle M. Why is learning and memory dysfunction in Type 2 diabetes limited to older adults? *Diabetes Metab Res Rev*(2000);16(5):308-15.
- 17- Sinclair AJ, Girling AJ, Bayesr AJ. Cognitive dysfunction in older subjects with diabetes mellitus: impact on diabetes self-management and use of care services. All Wales Research into Elderly(AWARE) Study. *Diabetes Res Clin Pract.*(2000);50(3):203-12.
- 18-Arvanitakis Z, Wilson RS, Bienias JL, Evans DA, Bennett DA. Diabetes mellitus and risk of Alzheimer disease and decline in cognitive function. *Arch Neurol*(2005);62(2):330.
- 19- Gasparini L, Xu H. Potential roles of insulin and IGF-1 in Alzheimer's disease. *Trends Neurosci*(2003);26(8):404-6.
- 20-Gispens WH, Biessels GJ. Cognition and synaptic plasticity in diabetes mellitus. *Trends Neurosci* (2000);23(11):542-9
- 21- Tehranipour M, Behnam Rasuli M, Rahimi A. Maternal hyperglycemia Proliferate Choroids Plexus and Enlarge the Lateral Ventricle in Brain of New born Rats. *JBS* (2008);8(4):799-803.
- 22- Tehranipour M, Khakzad M. Effect of Maternal Diabetes on Hippocampus Neuronal Density in Neonatal Rats. *JBS* (2008);8(6):1027-1032.
- 23- Paxinos G, & Watson C. The rat brain in stereotaxic coordinates. Maryland Heights, MO: Matthews Book Company(2007).
- 24-Gundersen H J G, Bendtsen T F and et al .Some new ,simple and efficient stereological methods and their use in pathological research and diagnosis. *APMIS*(1988);96(5):379-394.
- 25-McEwen BS. Stress and the aging hippocampus. *Front Neuroendocrinol*(1999);20(1):49- 70.
- 26- Sima AA, Li ZG. The effect of C-peptide on cognitive dysfunction and hippocampal apoptosis in type 1 diabetic rats. *Diabetes* (2005);54(5):1497-505.
- 27- Ornoy A Embryonic oxidative stress as a mechanism of teratogenesis with special emphasis on diabetic embryopathy. *Reprod Toxicol*(2007);24(1):31-41.
- 28- Rakeshwar S. Guleria, Jing Pan, Donald DiPette, and Ugra S. Singh. Hyperglycemia Inhibits Retinoic Acid–Induced Activation of Rac1, Prevents Differentiation of Cortical Neurons, and Causes Oxidative Stress in a Rat Model of Diabetic Pregnancy. *Diabetes*(2006);55:3326-3334.
- 29- Misumi Y, Yamato T, Obata T, Aomine M. Effects of ion channel blockers on basal hippocampal monoamine levels in freely moving diabetic and non-diabetic rats. *Int JNeurosci*(2008);118(6):761-80